

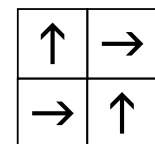
## specifications 884 Eco Cushtex

style name	grillwork sq
size	50 cm x 50 cm
construction	integrated tufted pattern loop
yarn	100% b.c.f. 6,6 nylon
dye method	solution dyed
guage	1/10
pile height	5.0 mm
total thickness	8.0 mm
pile weight	26 oz per sq yd (884gm/m <sup>2</sup> )
total weight	136 oz per sq yd - 4,624gm/m <sup>2</sup>
primary backing	polyester spunbonded
secondary backing	EcoGreenbac™ Recyclable Cushion
packing	16 pcs / 4sqm per box

## performance

wear classifications	heavy contract use	
flammability tests	CRF: 6.7kw/m <sup>2</sup> Smoke: 245%	AS/ISO 9239.1
soil resistance	8 of 10 passed	(3M test method)
colourfastness to light	greater than 4	(AATCC 16E)
colourfastness to crocking	greater than 4	(AATCC 165)
static load	min 85% recovery in 96 hour	
electrostatic propensity	less than 2.0 kv	(AATCC 134)
dimensional stability	less than 0.2%	(AACHEN test & DIN 54318)
antimicrobial test	pass	(AATCC 174)
compression test	pass	(ASTM D 1667)

recommended installation method



1/4 turn